

My e-Sword

In the past, I spent lots of money on Bible translations and study tools. They were expensive and bulky to use. Not to mention that I needed two big book shelves to hold these reference books. I also tried different bible softwares for Windows desktop such as [The Online Bible](#) , [The e Sword](#)

,
[Theophilos](#)

,
[BibleDatabase](#)

,
[QuickVerse](#)

, etc., except the very expensive one, but still not satisfy my need especially without other Chinese translations. Recently, I discovered e-Sword Bible software from www.e-sword.net

. It is a

[Free](#)

software package with easy installation procedure. Average user should have no problem installing this program. The e-Sword bible software comes with lots of features that I long for.

These features are but not limit to the below mentioned:

-
- easy to navigate
- display your favorite Bible translation
- logical Bible word/phrase fast search
- create your own translations lookup
- zoom and split display area
- compare all your translations on a selected verse
- configurable program layout to fit your personal study environment
- mark and/or highlight verses you wanted
- quick commentary reference
- bookmark passage

- create your own Bible reading schedule
- mouse pointer on Strong's number to display definition
- Greek, Hebrew as well as Chinese display
- copy Scripture message in varies format
- mouse pointer on Scripture dictionary/topical reference display
- copy Scripture directly from Microsoft Word through Macro
- create your own notes with integrated Study Note editor
- built-in map viewer
- create your own topical lists
- prayer request and maintenance list
- STEP reader for viewing various Christian resource
- plus lots of translations, commentaries, dictionaries, devotional material that can be downloaded from the official website

In addition, I can also make my own modules into e-Sword. With this powerful program, now I have over 20 versions of [bible translations](#) on my desktop, as well as [commentaries](#) , [dictionaries](#) , [maps](#)

, [devotion materials](#)

etc. With my new

[Hymn module](#)

, I can sing along with my hymn book and even learn new songs with it. It is a complete and free Bible study package and only couple clicks away. For more information about this program as well as support this ministry, please visit

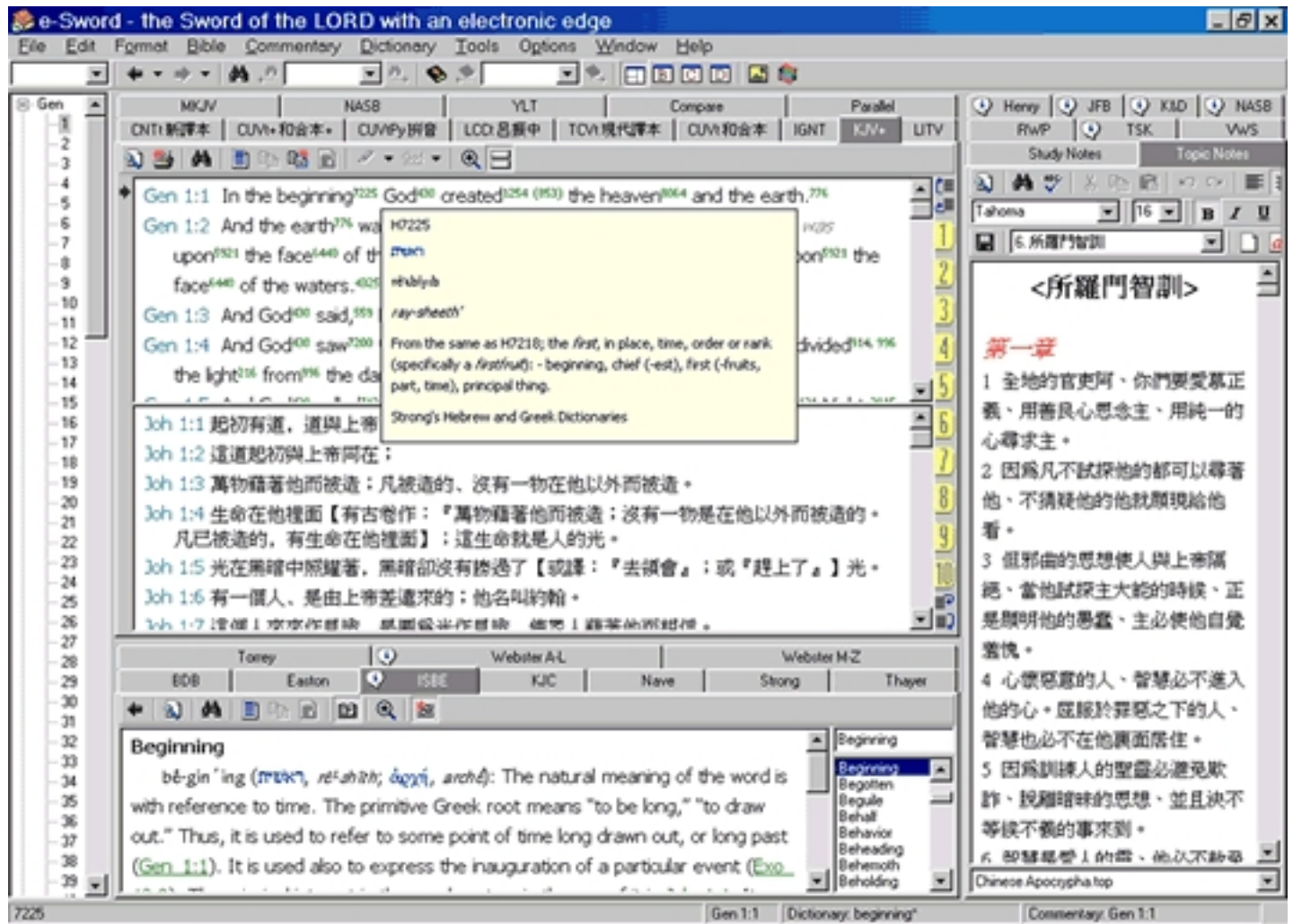
<http://www.e-sword.net>

. Also visit

<http://www.e-sword.net/pocketpc/index.html>

for PocketPC.

(Please note that version 9 modules can be downloaded from [HERE](#) .)



These are the modules that I made for my e-Sword program for Microsoft Windows Platform.

Traditional Chinese/繁體 (Big-5) Bible Version:

Chinese PinYin Bible based on Chinese Union Version
 Chinese Union Version with Footnotes and Strong's Number

These modules are available in [HERE](#) .

Note:

1. Make sure [Chinese fonts pack](#) is installed on your Windows 95/98 system for all Chinese modules. You can also install fonts pack by using "Windows Update" from Internet Explorer. Select "Chinese (Traditional) Language Support" and "Chinese (Traditional) Menu and Dialogs for Internet Explorer".

2. All the modules will install to the default e-Sword directory which is "C:Program Filese-Sword".

3. Under Windows 2000 and XP, re-configure the "Regional and Language Option" setting to Chinese is necessary. Due to the current software limitation, some system may not display Chinese characters correctly in certain area in English version of Windows unless using third party Chinese system.

4. Warning: Ancient Greek may not be displayed correctly after Chinese system installed.

Simplified Chinese/简体中文 (GBK) Bible Version:

This module is using GBK encoding that fix the missing words in GB2312 encoding.

Chinese Union Version (简体中文)

These modules are available in [HERE](#) .

Note:

1. Make sure [Chinese fonts pack](#) is installed on your Windows 95/98 system for all Chinese

modules. You can also install fonts pack by using "Windows Update" from Internet Explorer. Select "Chinese (Traditional) Language Support" and "Chinese (Traditional) Menu and Dialogs for Internet Explorer".

2. All the modules will install to the default e-Sword directory which is "C:Program Filese-Sword".

3. Under Windows 2000 and XP, re-configure the "Regional and Language Option" setting to Chinese is necessary. Due to the current software limitation, some system may not display Chinese characters correctly in certain area in English version of Windows unless using third party Chinese system.

4. Warning: Ancient Greek may not be displayed correctly after Chinese system installed.

Interlinear Greek Version:

Septuagint LXX Greek	Old Testament with Strong's Numbers and complete parsing information
Combined Greek New Testament Manuscripts: 1550 Stephens Textus Receptus (T), 1894 Scrivner T	
1991 Byzantine/Majority New Testament with Strong's Numbers and complete parsing information	
1550 Stephens Textus Receptus, 1894 Scrivener Textus Receptus with Strong's Numbers and complete	
Interlinear Greek New Testament with Strong's Numbers	
Westcott-Hort New Testament text from 1881, combined with the NA26/27 variants, with Strong's Num	

These modules are available in [HERE](#) .

Note:

1. For Greek Parsing Syntax, please lookup from [here](#) or download Robinson's Morphological Analysis Codes from this site..

2. All the modules will install to the default e-Sword directory which is "C:Program Filese-Sword".

OT and NT Lexicons/Dictionary:

Robinson's Morphological Analysis Codes (excellent companion for Greek Bible with parsing info)

These modules are available in [HERE](#).

Hymns with Tunes:

Hymns of Life (□□□□/Bl)

These modules are available in [HERE](#).

Note:

1. This module has been created as a Topic Notes file and will not have its own "tab". It can be accessed through the Study Notes editor. Switch the editor into the Topic Notes mode and open the resource by selecting the appropriate entry in the resources combobox at the bottom of the editor area.
 2. All the modules will install to the default e-Sword directory which is "C:Program Filese-Sword".
 3. Media Player is needed to play music.
-

Other Work:

Apocrypha in Chinese (□□□□□□/Big-5)

Note:

1. This module has been created as a Topic Notes file and will not have its own "tab". It can be accessed through the Study Notes editor. Switch the editor into the Topic Notes mode and open the resource by selecting the appropriate entry in the resources combobox at the bottom of the editor area.

2. All the modules will install to the default e-Sword directory which is "C:Program Filese-Sword".